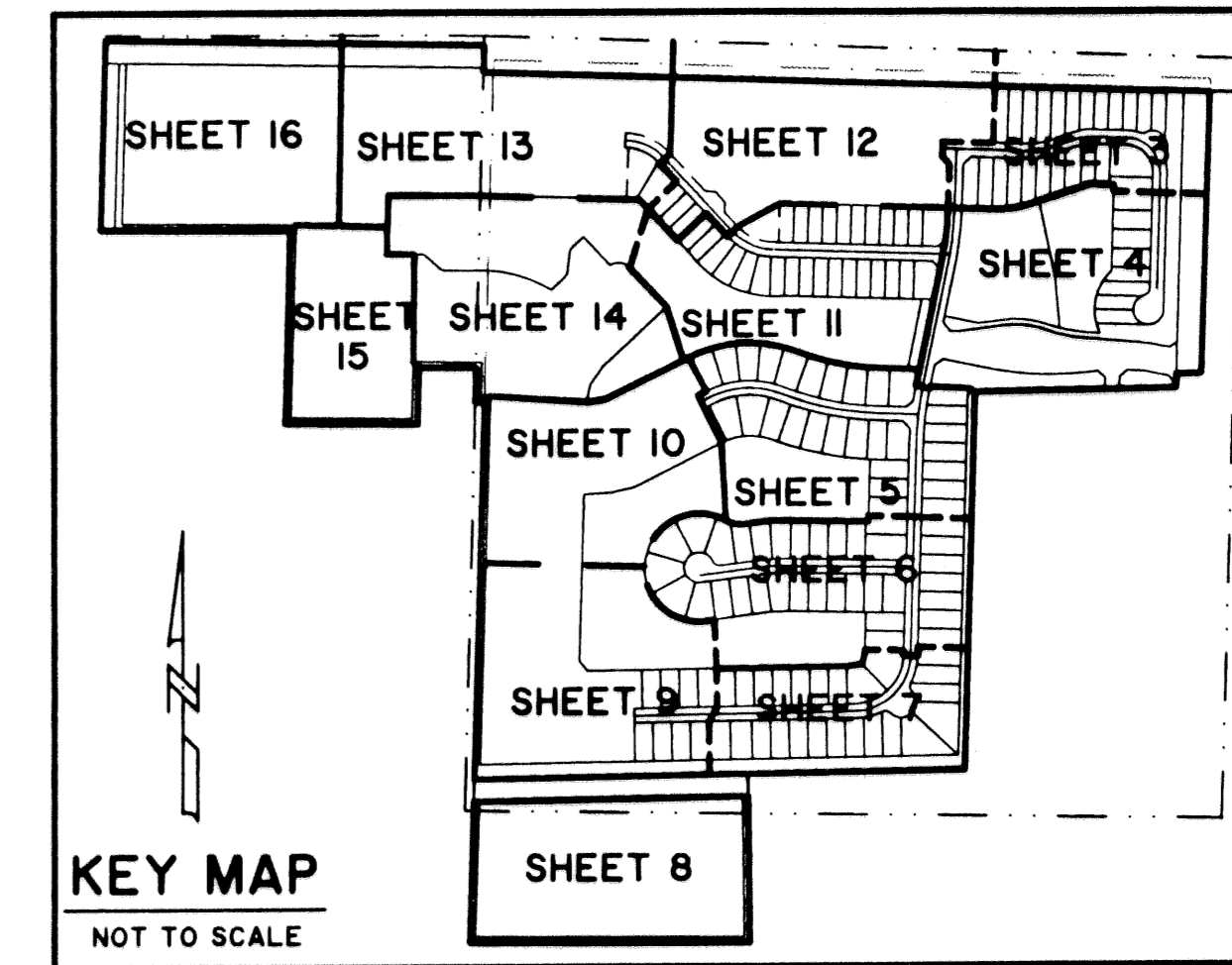
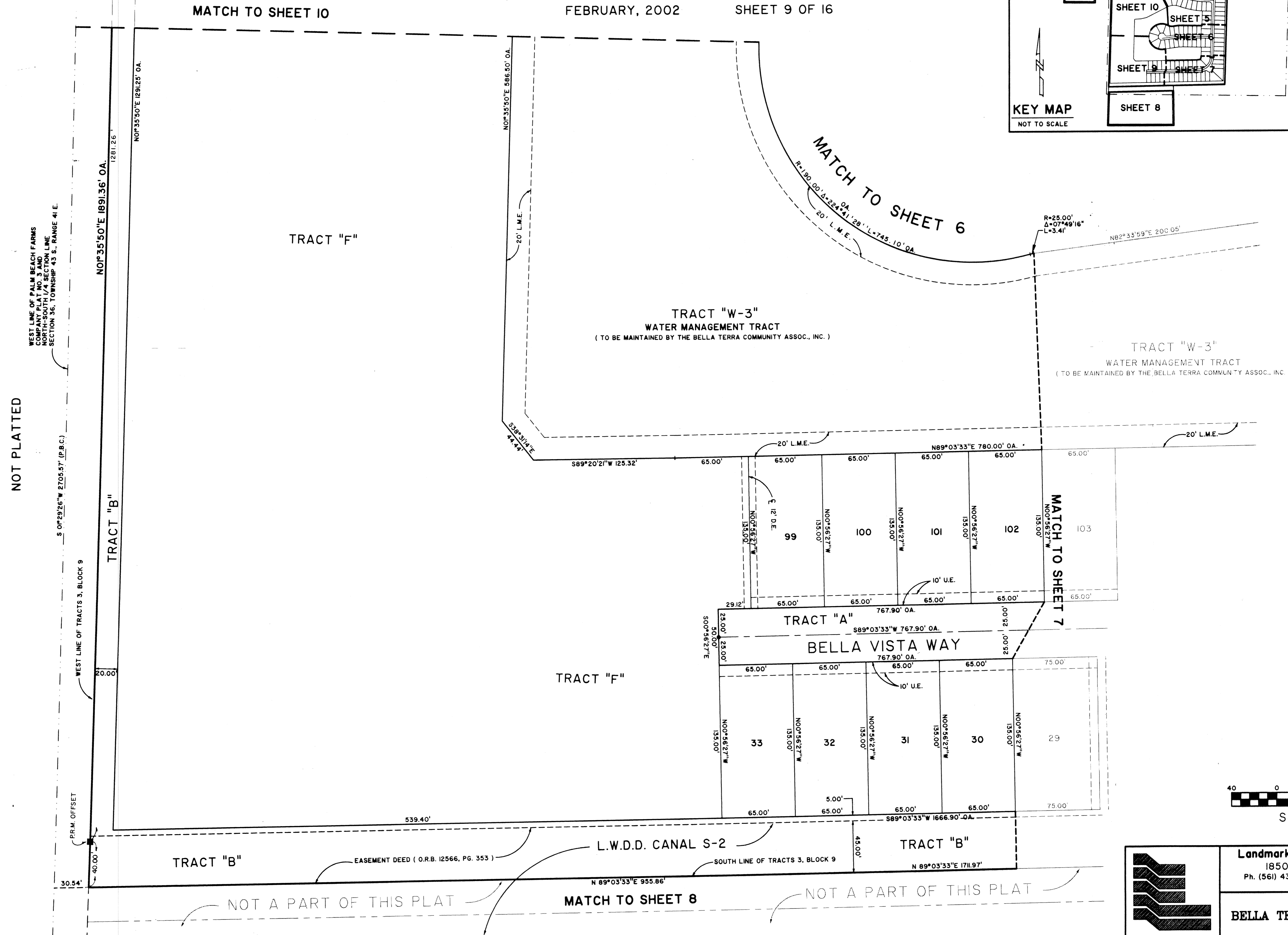


# BELLA TERRA P.U.D. PLAT NO. 1

BEING A REPLAT OF A PORTION OF BLOCK 9, PALM BEACH FARMS COMPANY PLAT NO. 3, AS RECORDED IN PLAT BOOK 2, PAGES 45 THROUGH 54, PUBLIC RECORDS OF PALM BEACH COUNTY, FLORIDA AND A PORTION OF SECTION 36, TOWNSHIP 43 SOUTH RANGE 41 EAST, VILLAGE OF ROYAL PALM BEACH, PALM BEACH COUNTY, FLORIDA.  
FEBRUARY, 2002 SHEET 9 OF 16



STATE OF FLORIDA SS  
COUNTY OF PALM BEACH  
THIS PLAT WAS FILED FOR RECORD AT \_\_\_\_\_  
M, THIS \_\_\_\_\_ DAY OF \_\_\_\_\_ 2002  
AND DULY RECORDED IN PLAT BOOK NO. \_\_\_\_\_  
ON PAGE \_\_\_\_\_  
DOROTHY H. WILKEN, CLERK OF THE CIRCUIT COURT  
BY \_\_\_\_\_ D.C.



NOT PLATTED

WEST LINE OF PALM BEACH FARMS COMPANY PLAT NO. 3 AND NORTH-SOUTH 1/4 SECTION LINE SECTION 36, TOWNSHIP 43 S., RANGE 41 E.

S 0°29'26" W 2705.57' (P.B.C.)

WEST LINE OF TRACTS 3, BLOCK 9

P.R.M. OFFSET

N0°35'50"E 1891.36' OA.

N0°35'50"E 1281.26'

TRACT "B"

TRACT "B"

TRACT "F"

TRACT "F"

TRACT "W-3"  
WATER MANAGEMENT TRACT  
( TO BE MAINTAINED BY THE BELLA TERRA COMMUNITY ASSOC., INC. )

TRACT "W-3"  
WATER MANAGEMENT TRACT  
( TO BE MAINTAINED BY THE BELLA TERRA COMMUNITY ASSOC., INC. )

TRACT "A"

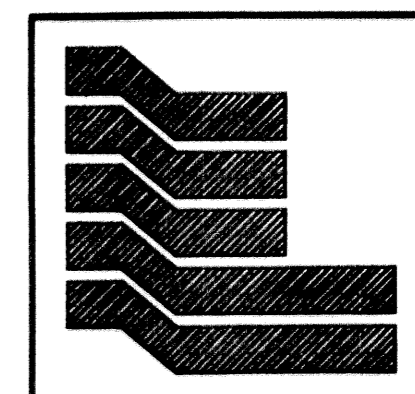
BELLA VISTA WAY

TRACT "B"

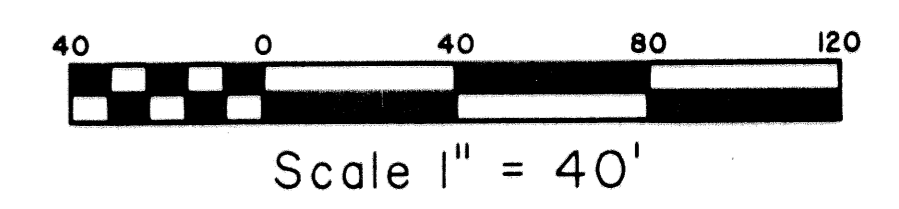
NOT A PART OF THIS PLAT

MATCH TO SHEET 8

NOT A PART OF THIS PLAT



Landmark Surveying & Mapping Inc.  
1850 Forest Hill Boulevard  
Ph. (561) 433-5405 Suite 100 W.P.B. Florida  
LB # 4396



BELLA TERRA P.U.D. PLAT NO. 1